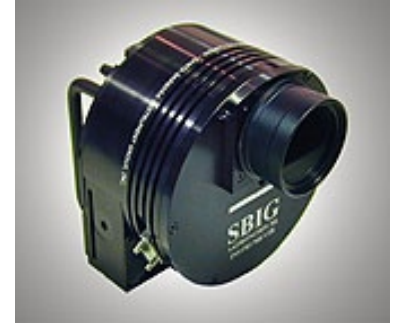




a division of Aplegen, Inc.

## ST-9XE and ST-9XEI

### Typical Specifications



CCD	
CCD	Kodak KAF-0261E + TI TC-237
Pixel Array	512 x 512 pixels
CCD Size	10.2 x 10.2 mm
Total Pixels	262,000
Pixel Size	20 x 20 microns square
Full Well Capacity	~150,000e-
Dark Current	4e- / pixel / sec at 0°C
Antiblooming	n/a

Readout Specifications	
Shutter	Electromechanical
Exposure	0.12 to 3600 seconds, 10ms resolution
Correlated Double Sampling	Yes
A/D Converter	16 bits
A/D Gain	1.6e- / ADU
Read Noise	15e- RMS
Binning Modes	1 x 1, 2 x 2, 3 x 3
Pixel Digitization Rates	Up to 420,000 pixels per second with USB 2.0
Full Frame Download	<1 second

System Specifications	
Cooling – standard	Single Stage Thermoelectric, Active Fan, Water Assist, -45°C from Ambient Typical with water, -35°C w/air only
Temperature Regulation	±0.1°C
Power	5VDC at 1.5 amps, +/-12VDC at 0.5 amps, power supply included
Computer Interface	USB 1.1
Computer Compatibility	• Windows 98 / 2000 / Me / XP
Guiding	Dual CCD Self-Guiding with built-in TC-237 CC

Physical Dimensions	
Optical Head	5 inches diameter x 3 inches 12.5 cm diameter x 7.5 deep
CPU	All electronics integrated into Optical Head, No CPU
Mounting	T-Thread, 2" nosepieces included
Weight	Approx. 2 pounds (0.9kg)
Backfocus	0.92 inches (2.3 cm)

© 2011 Aplegen, Inc. All rights reserved. The Aplegen wordmark and logo are trademarks of Aplegen, Inc. All other trademarks, service marks and tradenames appearing in this brochure are the property of their respective owners.

Santa Barbara Instrument Group, a division of Aplegen, Inc. | 147-A Castilian Drive, Santa Barbara, CA 93117  
 t 805.571.7244 | f 805.571.1147 | w www.sbig.com | e sbig@sbig.com